

Erie's Public Schools  
Cyber Choice Academy  
Cyber School Student Program Guide



816 North Park Avenue  
Erie, Pennsylvania 16502  
814-874-6450

Fax 814-874-6456

Jill Crable, Principal  
Eric Sandberg, Assistant Principal

# Table of Contents

---

Welcome to the Cyber Choice Academy High School	3
Login/Account Information	3
Orientation	4
Trial Period	4
Online Learning	5
Logging In and Getting Started	5
In-Person Labs	5
Virtual Zoom Sessions	6
Imagine Edgenuity - What Is It and How Do I Use It?	6
Okay, I'm in Edgenuity. Now what?	9
Curriculum & Instruction	10
Materials	10
Attendance	11
Can I Check My Attendance Myself? Yes, You Can!	11
Weekly Contact	12
Progress	12
Progress Reports	13
Certified Teachers	13
Communication (Email)	13
Students	13
State/District Assessment	13
Credit Breakdown	14
Pathways to Graduation	15
ACT 158 Graduation Decision Tree	16
Smart Futures	17
Expectations - Code of Conduct	18
Schoolwide Positive Behavior Interventions and Support (SWPBIS)	19
Final Note	19
Cyber Choice Academy Student Checklist	20

# Welcome to the Cyber Choice Academy!

Erie’s Public Schools is proud to offer the Cyber Choice Academy at Emerson-Gridley as Erie’s leading online learning environment. As the district’s home for online educational programming, the Cyber Choice Academy at Emerson-Gridley hosts non-traditional learning experiences unlike anything offered by any other school district in Northwest Pennsylvania. Students who are enrolled into the Cyber Choice Academy will earn high school credits via the program’s online platform, Imagine Learning (commonly called “Edgenuity”). The Patrick J. DiPaolo Student Success Center at Emerson-Gridley houses two computer labs for cyber students to utilize if they choose, and is fully staffed with teachers and counselors to assist students in their learning.

What makes the Erie’s Public Schools Cyber Choice Academy most attractive is the ability for students to earn a diploma from home while still participating in the Erie’s Public Schools (EPS) community. As EPS students, online students are eligible to participate in all extracurricular activities, including athletics, prom, commencement, Career and Tech Education, and more. Students who complete their graduation requirements online earn the same high school diploma carry the same expectations and responsibilities as their peers in traditional classrooms. Most importantly, students enrolled in the Cyber Choice Academy have support from highly qualified teachers. Faculty and staff at the Cyber Choice Academy offer on-site lab sessions every day, and appointments for one-on-one instruction, both in-person and via Zoom, are always available.

Congratulations on your decision to enroll in the EPS Cyber Choice Academy! We can’t wait to help you get started... so you can get finished!

## Login/Account Information

Record your login information here to have on hand:

Student Name _____	Homeroom Teacher _____
Chromebook <a href="mailto:_____@eriesd.org">Email _____@eriesd.org</a>	Chromebook Password _____
Edgenuity Login _____	Edgenuity password: _____

***The Board of Education for the School District of the City of Erie established the Cyber Choice Academy and reserves the right to deny admission to the program if it does not serve the best educational interests of the student.***

## Orientation

---

Ready to get started? Please view the online orientation video available on Emerson-Gridley's web page (link below). This video provides a brief overview of our program, but for the best possible experience, we recommend you consider joining us for an in-person orientation as well.

Like any other school in the district, the Cyber Choice Academy always kicks off its school year with an Open House, during which students and families have the chance to meet the teachers who support our Cyber families throughout the year. Similar orientations are offered periodically through the school year. All students also are encouraged to attend at least two lab sessions in person at Emerson-Gridley to get a feel for all the program has to offer.

This Program Guide serves as an additional resource for families. We recommend that you keep this Guide in a place where you can find it easily to help you when you have questions about any aspect of Erie's cyber education programming.

Please visit [www.eriesd.org/eriesd](http://www.eriesd.org/eriesd) for login access, orientation videos, and teacher information.

## Trial Period

Our goal is to make sure that you are in the best possible learning environment to succeed. To help you in your transition from the demands and expectations of a traditional classroom setting to the unique differences and challenges you'll find in the cyber program, we initially enroll you in a three-week trial period.

During the trial period and throughout your enrollment at the Cyber Choice Academy, you will be expected to meet weekly hour and progress standards required of all cyber students. Cyber students are required to spend a minimum of five hours each school day logged on to Edgenuity AND must complete at least 20 Edgenuity activities each school day. That equates to 25 hours and 100 activities in a five-day school week. You'll find that some of the activities that you need to complete toward the 100-activity minimum are things like 10-question quizzes that can be finished in just a few minutes.

If you do not meet the weekly hour and progress standards during the three-week trial period, you will be automatically enrolled at Erie High School. So keep up! We want you here!

You must continue to meet weekly hour and progress standards once you complete the trial period. *If you fall behind in your coursework and risk failing, you'll be placed on an Academic Support Plan that will require daily attendance in the cyber lab at Emerson-Gridley for 15 days.*

THIS IS NOT A PUNISHMENT. This is to make sure you don't lose the important progress you're making toward your goal of graduation.

During the 15-day support plan period, you'll receive one-on-one support from teachers and staff while you spend time at Emerson-Gridley. The Academic Support Plan is intended to get you back on track to completing your coursework on time. But we can't do it for you. If you fail to follow the Academic Support Plan or refuse to come into the labs, you will be enrolled at Erie High School.

## Online Learning

The online learning platform you will use to earn credits is called *Imagine Learning (Edgenuity)*. You'll hear everyone here refer to it simply as "Edgenuity," or "Edge." Edgenuity is a web-based program that hosts all the courses you need to earn the academic credit required to graduate from Erie's Public Schools.

### **LOGGING IN AND GETTING STARTED**

Your login for Edgenuity is the initials of your first and last name followed by your six-digit lunch number. (For example, if your name is Alex Baker and your lunch number is 654321, you'd log in to Edgenuity with a Username of AB654321.) Your password is your six-digit lunch number.

Once you're logged in, the first page you'll see is called your Dashboard. There you'll find all your coursework. You will have access to courses totaling eight credits at any given time, each of which is accessible through your Dashboard. This allows you to progress through your courses as efficiently as possible. We strongly urge you to work on **all your courses** on your Dashboard at the same time, and not just focus on one course until it's done. The Dashboard is equipped with progress bars that will let you see how much of the course you've completed and how much you have left. You'll be surprised at how quickly you get things done by working on multiple subjects at once!

### **IN-PERSON LABS**

You are welcome to visit our labs and work with our certified teachers any time you feel you need in-person support.

Our Cyber Labs are located on Emerson-Gridley's top floor. We offer two sessions each day: the morning session, from 8-11 a.m. and the afternoon session, from 12-3 p.m. Students who attend the morning lab are invited to attend lunch in the cafeteria from 11-11:30 a.m. before exiting the building. Students who attend Emerson-Gridley's afternoon lab may arrive at 11:30 a.m. to eat lunch beforehand if they desire. Students must report to the cafeteria and may not leave lunch

early. For safety purposes, we ask that all students follow this time schedule. Also for safety reasons, the district is requiring all students attending a Cyber Lab session, whether morning or afternoon, to remain for the entire session. If you have an appointment of some kind at 10 a.m., for example, and you were thinking about going into the Cyber Lab that morning, it's best to just work from home and report to the Cyber Lab when you are able to stay for the whole time.

The Cyber Choice Academy reserves the right to require lab attendance for students who have fallen behind or have not routinely been achieving their attendance requirements. In other words,

1. if you who have not met your attendance requirements for three consecutive weeks, we may alter your attendance requirements and ask that you attend in-person labs for two sessions per week until your improve your at-home participation, and
2. if you fail to keep pace in your courses, we may similarly require you to attend in-person labs to work with a teacher to get caught up.

Lab sessions give you the opportunity to learn and work in a quiet environment where you have access to teachers in real time. You can get help with quizzes, tests, and comprehensive exams, get mini-lessons on information you're struggling with, or just get help navigating through some tricky concepts. **NOTE: Attendance in lab does not automatically fulfill your daily attendance and progress requirement. You must log 5 hours of online work and 20 activities daily.**

Coming into the lab gives you a leg up. It's time dedicated to you with teachers who will focus directly on your needs. In return, however, we do ask that you keep in mind that lab times are open to all. Some days may get busy and you may have to share the teachers available to you. It's important that you remember to be respectful, resilient, and responsible with your behavior. The expectations of the Cyber Lab are no different than those of a regular classroom. Be respectful and conduct yourself appropriately or you will be asked to leave. Your one-on-one learning time will be rescheduled for a Zoom session.

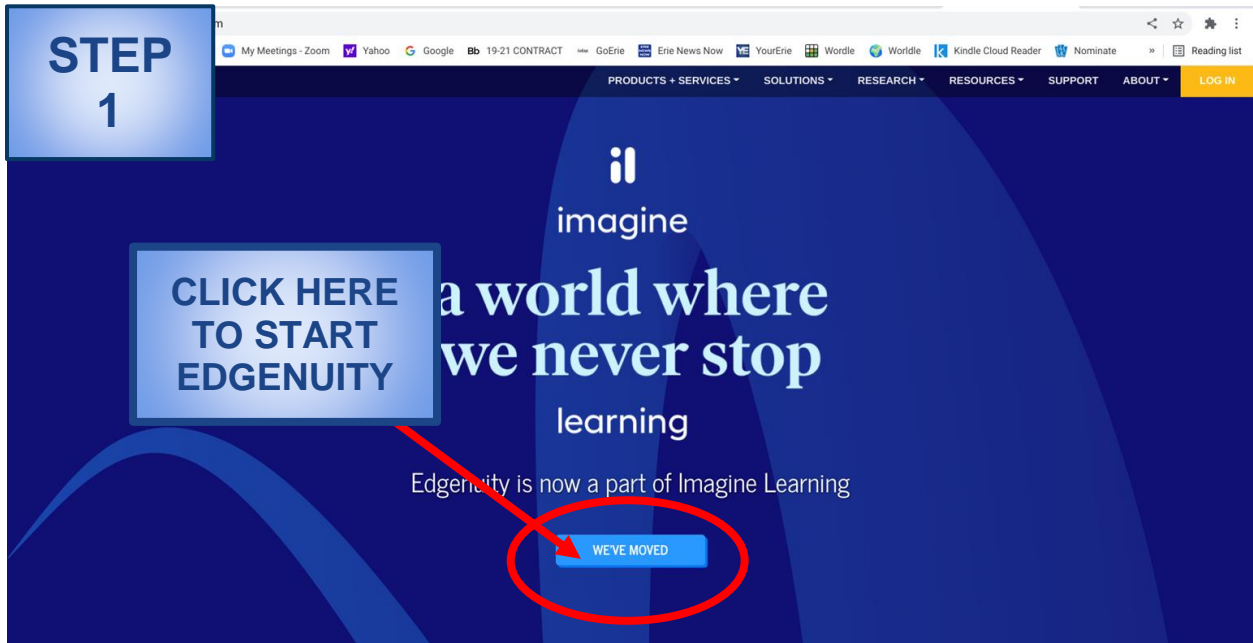
## **VIRTUAL ZOOM SESSIONS**

If you need extra assistance but are unable to access our labs, you may request extra help from our certified teaching staff through Zoom. Every teacher at Emerson-Gridley has a daily Zoom schedule during which you can join the Zoom, ask your questions, get your tests unlocked, or just have some personal attention with lessons taught in real-time. If we notice you are struggling with a concept or that you keep needing retakes on a test or quiz, a teacher may reach out to you by email to schedule a Zoom session. The Zoom schedule for this school year is in Appendix I.

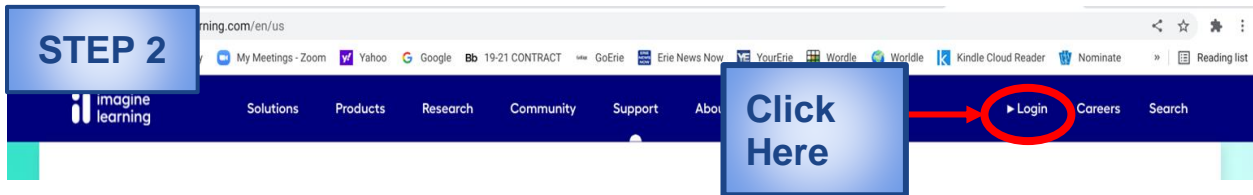
## **Imagine Edgenuity - What is it and How do I use it?**

The online learning platform you will use to earn credits toward graduation is from a site called Imagine Learning. Imagine Learning is the new home of a web-based program called "Edgenuity," which hosts all the courses you need. Read on to learn how to log on and navigate the portal.

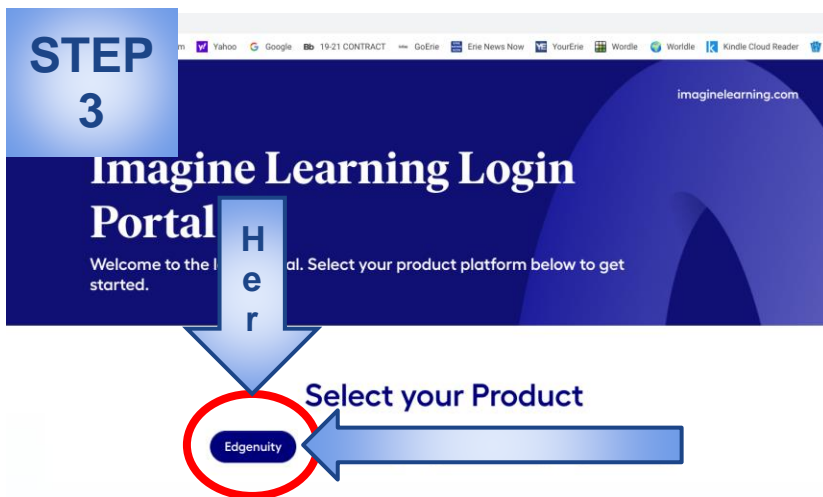
STEP 1. Type “edgenuity.com” into your browser’s address bar to get to this page. Click “We’ve Moved.”



Click “Login.”



Which will take you here:

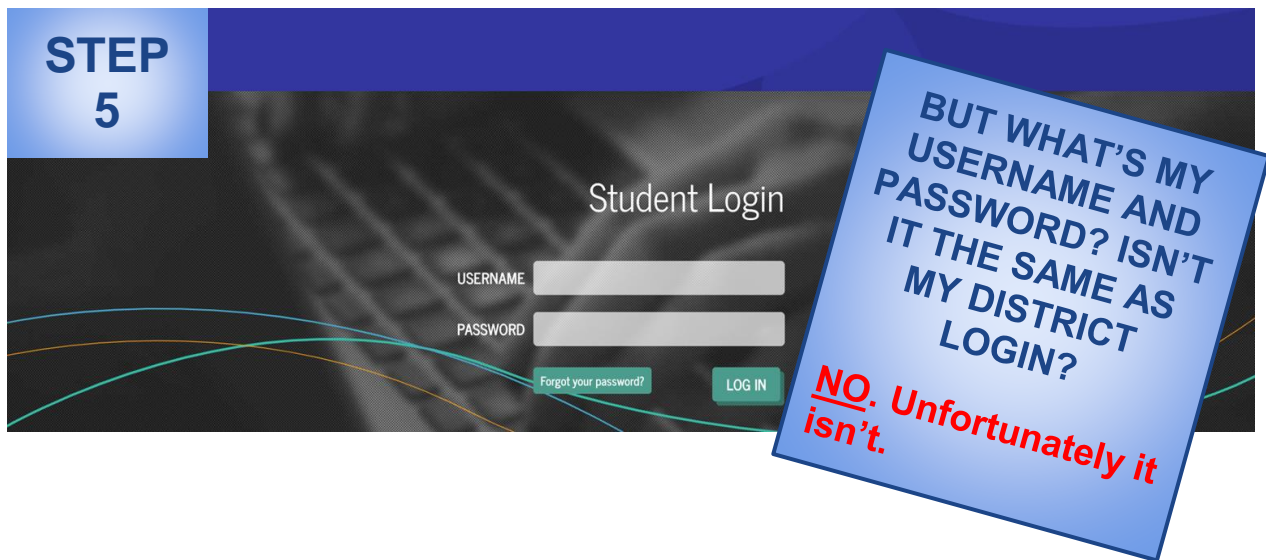


Great job! You’re almost there! IMPORTANT NOTE: You really should only have to do this once. After you navigate to the Edgenuity login screen the first time, you can bookmark it and then just click on the bookmark to skip all this in the future.

Clicking on the “Edgenuity” button will take you to this page. Click on Edgenuity Student Login.



Now... YOU'RE HERE! This is the screen you're looking for:

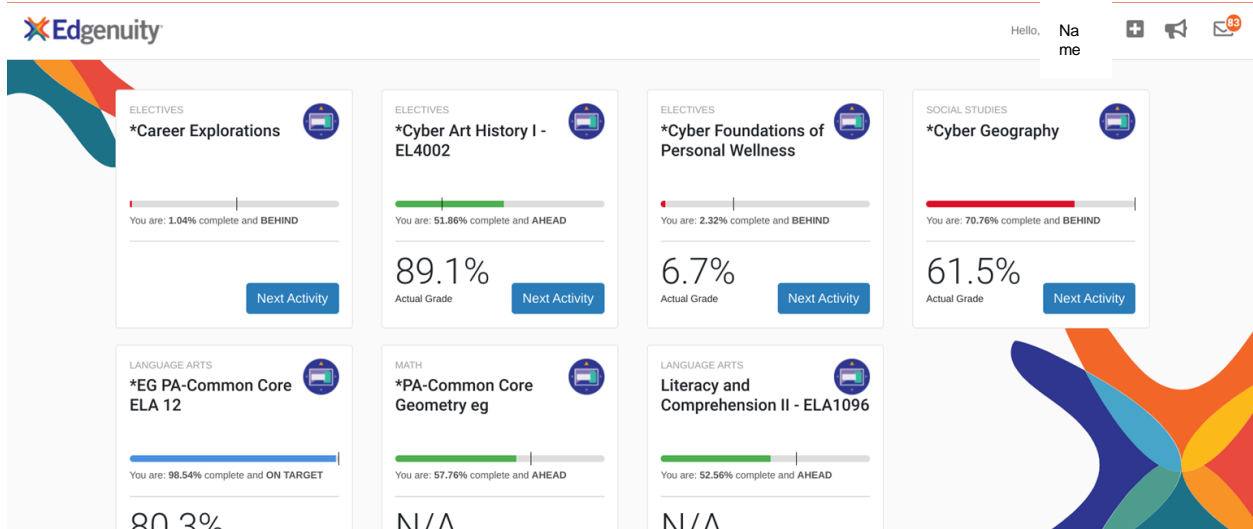


When you go through orientation at Emerson-Gridley, you will receive your username and password for Edgenuity at that time. If you missed orientation or don't have this information, or if you forget it or lose it, just contact any of your classroom teachers. They will be able to help you remember your login credentials or have them reset for you.

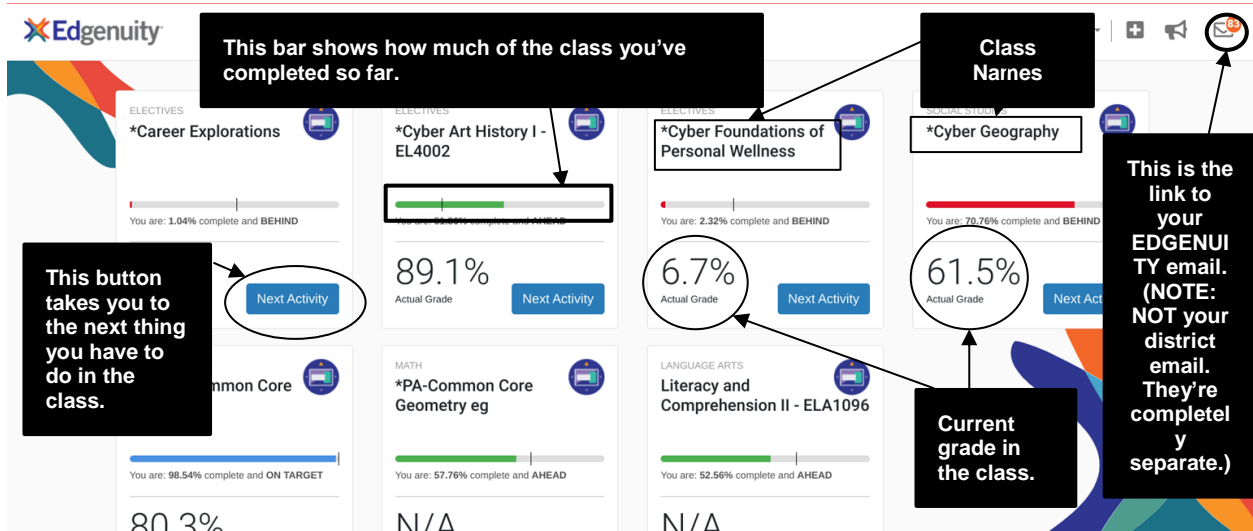


# Okay, I'm in Edgenuity. Now what?

Your first page will likely look something like this. This is a graphic representation of the coursework currently assigned to you.



Let's take a closer look at what these blocks are telling us:



This page will be your "base camp," the place where you'll start each session and where you'll return when you want to switch up what it is that you're working on.

More information about Edgenuity will come in your classroom sessions, but should you need them, here are the links to the Orientation videos:

<https://youtu.be/Cv8uLsnYNBM>  
<https://youtu.be/5978276525001>

<https://www.edgenuity.com/video-library/>

## Curriculum & Instruction

Imagine Edgenuity courses are designed to meet state standards and ensure that you've mastered all the required subject-area benchmarks. Erie's Cyber Choice Academy expects you to be self-motivated and to be able to work independently; after all, that's what enrolling in Cyber is all about – having the flexibility to work at your own pace and tackle your coursework in your own way.

Courses in Edgenuity are broken down into units that contain multiple activities you need to complete. Here's what that looks like:

**WARM UP:** You'll watch a short video introducing the material you are about to study.

**INSTRUCTION:** This is how Edgenuity teaches the material in this lesson.

**SUMMARY:** This is a short video recapping what was covered in the lesson.

**ASSIGNMENT:** This is where you practice or showcase what you learned in the lesson.

**QUIZ:** 10 question quiz on what was covered within the lesson in this specific unit.

**UNIT TEST:** Combines lessons from the unit into a 25 question test covering the entire unit.

**INTERACTIVE LEARNING TOOLS:** Study aids such as, Read Aloud, Guide Notes, and Text Translation, help students access content, organize information, and complete assignments.

Because each lesson builds upon the one before, you will be asked to demonstrate that you have reached a certain level of understanding of the material before moving on to more difficult material. **The Imagine Edgenuity program is academically rigorous.** Meeting the challenge of completing one year of coursework in this model is demanding – but at the Cyber Choice Academy, you're never alone even though you're working independently. Help is just an email or a lab-visit away.

## Materials

Erie's Public Schools provides all students with a District-owned Chromebook. If you are new to the district or do not have a Chromebook from your previous school, you may visit the main office at Emerson-Gridley and request that a Chromebook be assigned to you. **THIS IS NOT A REQUIREMENT.** If you already own a computer or laptop of your own and do not want the responsibility of having a District-owned Chromebook, you are free to access Edgenuity through your own computer. Families that do take advantage of this courtesy, however, are responsible for the replacement of all lost, stolen, or damaged school Chromebooks, including power cords. Chromebooks that are not working can be switched out in the office for a new one, which may require a small fee.

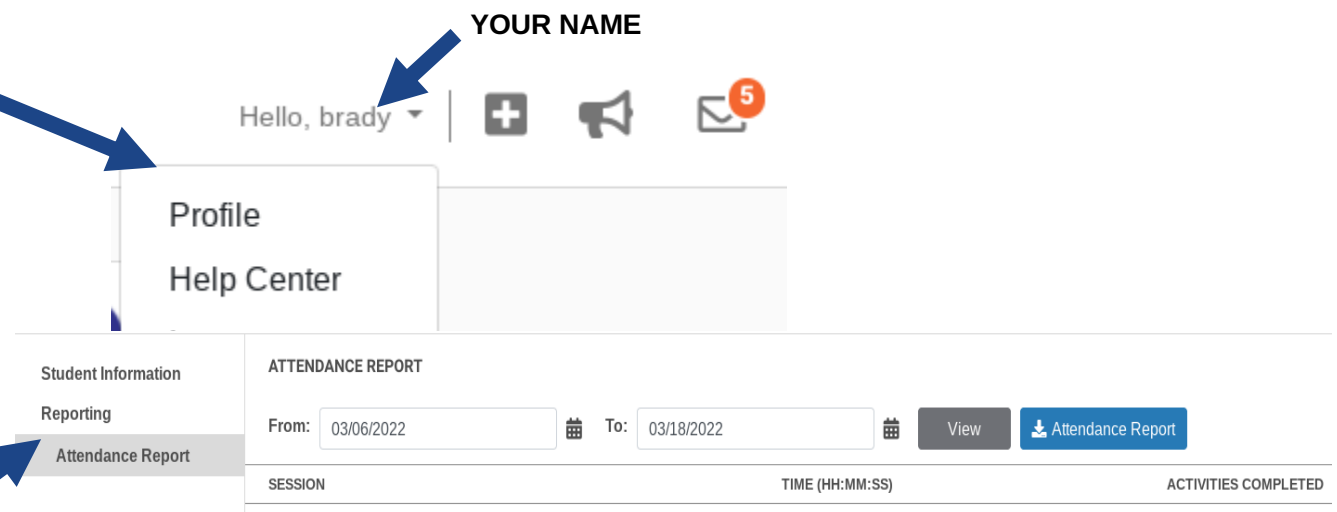
# Attendance

Attendance is measured by the number of hours that you spend on Edgenuity, which is automatically tracked by the program. The *minimum* requirement is **5 hours per school day**. If you do not log on for 5 hours during a school day, you will be marked absent for that day. The Cyber Choice Academy follows the District calendar published on the Erie’s Public Schools’ website ([www.eriesd.org](http://www.eriesd.org)). When school is in session, so is the Cyber Choice Academy. This means that, as a student in the Cyber Choice Academy, you are expected to be in attendance five hours per day, for five days per week which would equal 25 hours every week. For every 5 hours not completed, students are then considered absent for a day and an excuse for that absence will need to be emailed to [esandberg@eriesd.org](mailto:esandberg@eriesd.org) or brought into the Emerson-Gridley Office. By extension then, weeks when school is in session for fewer than five days in a week (usually around the longer breaks like Thanksgiving, Winter Break, and Spring Break) you need only meet the five hour per day requirement for the days school is in session. Refer to the District Calendar for more information on days school is in session.

School is always in session unless the District Calendar records that day as a Non-Attendance Day. Now that the District has provided each student with a Chromebook, “snow days” are a thing of the past. School days that might once have been canceled due to inclement weather are now referred to as “Flexible Instruction Days.” You must still record five hours and 20 activities on a Flexible Instruction Day.

## Can I Check My Attendance Myself? Yes, You Can!

Here’s how: As a Cyber student, you have access to your login times and Activities Completion Report any time you want it. In your *Edgenuity* account, find and click on your name at the top of the screen. Then select “Profile” in the drop-down menu, and then click “Attendance Report” on the left side. Your screen should look like this:



## Standards - Time and Progress

### **Weekly Contact:**

When you enroll in the Cyber Choice Academy you will be assigned a homeroom teacher. You must make contact with your assigned homeroom teacher at least once a week by email, phone, or text. Being in weekly contact with your homeroom teacher is one way to make you don't run the risk of falling behind.

### **Progress:**

Maintaining your attendance is extremely important, but equally important is maintaining good progress. The cyber learning environment is self-paced, and you have to make every effort to progress through your courses. Your cyber teachers measure this progress by the number of activities that you complete. As we've mentioned, these activities include a variety of the following; videos, assignments, writing prompts, discussion posts, essays, quizzes, reviews, tests or exams. You are free to switch from course to course on your dashboard throughout the day to complete as many activities as possible. The more activities you complete, the faster you will finish your courses.

Edgenuity uses a simple color scheme in their graphic representation of your progress: Blue means you're on track, right where you should be. Green means you are surging ahead of where we might expect you to be. Red indicates that you are behind where you should be. Avoid the red at all times!

***REMEMBER: You must complete a minimum of 20 activities/day, for a total of 100/week.***

**0 - 80 Activities per week = Falling Behind in Courses/Credits**

**80 - 100 activities per week = On Target**

**100 + activities per week = Ahead on Courses OR early Graduation**

### **Progress Reports:**

Your homeroom teacher will mail home a progress report every four weeks. Progress reports will list all currently enrolled courses, current grades, current progress in the course, and the expected current progress level for each course. Be aware that your parent or guardian may have signed up to receive daily progress on your courses via the Parent Portal feature of Edgenuity.

### **Certified Teachers:**

Our teachers are available to help you understand the material, reteach a concept, and provide additional resources to help you make progress through your courses. Teachers are assigned to individual students by homerooms arranged in alphabetical order (alpha groups). Teachers are also assigned by content area. All our teachers have scheduled Zoom times and open Zoom times. Students can schedule individual or small group time or attend an open Zoom to receive support in any area. A teacher may also set up a Zoom session if they determine that a student would benefit from instruction by Zoom.

### **Communication (Email):**

Communication is vitally important to your success in the Cyber Choice Academy. You are expected to check your Imagine Edgenuity email on a daily basis. We frequently have important announcements that we need to send you.

### **Students:**

As a Cyber Choice Academy student, you are expected to take an active role in your learning. You are responsible for completing all the courses, assignments, and projects you are assigned, as well as the weekly hours the program requires. You are expected to be actively online for 5 hours each day school is in session, for a total of at least 25 hours in a week. Within that week you should complete at least 100 activities/assignments in order to remain on track for course completion. If you are not on track for graduation, we WILL let you know! If that's the case, you then need to put in extra time and complete extra activities/assignments to get back on track.

## **State and District Assessments**

If you are enrolled in English 10, Algebra 1, or Biology, you will be expected to take the Keystone Exams as mandated by the Commonwealth of Pennsylvania. If you have taken the Keystone Exams before but have not passed or met the composite score requirement you may be assessed again. You will be contacted with the dates you are to report to Emerson-Gridley to meet this graduation requirement. (See "Pathways to Graduation" in the pages ahead for more information.)

## Credit Breakdown

To receive full credit for a class, you must complete the required coursework with a D or above. Just as you need to earn 26 credits to graduate high school, you must also complete a proscribed number of credits to be categorized as having attained a certain grade level.

Here's the breakdown of credits you need to earn in each grade to be eligible to move on to the next grade:

Grade	Credits
9th	0 - 6.0
10th	6.5 - 12.0
11th	12.5 - 18.0
12th	18.5 - 26

And here's a breakdown of credits by subject area you need to earn while you are in high school:

Subject	Number of credits
English	4.0
Math	4.0
Science	4.0
Social Studies	4.0 (.05 credit must be Government)
Physical Education	1.5
Electives	8.5
<b>Total needed</b>	<b>26</b>

## Pathways to Graduation

Our mission is to help you find a personal path to success. Your teachers will create and review a graduation plan with you that outlines what you must accomplish in order to earn a diploma.

Students graduating in 2023 and beyond can take one of several different pathways to meet Pennsylvania graduation requirements.

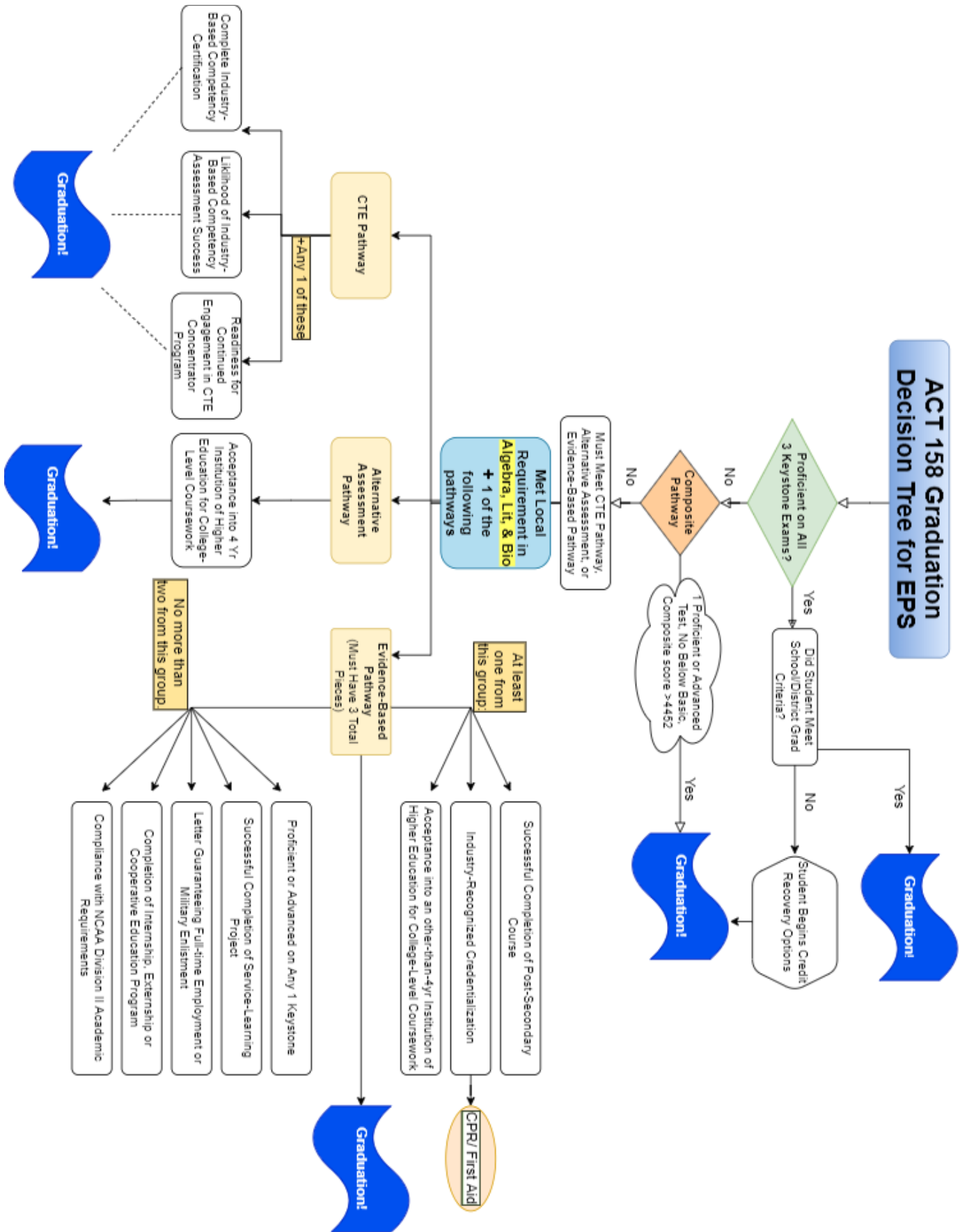
**Keystone Proficiency Pathway:** Scoring proficient or advanced on each Keystone Exam - Algebra I, Literature, and Biology.

**Keystone Composite Pathway:** Earning a composite score of 4452 on the Algebra I, Literature, and Biology Keystone Exams (while achieving at least a proficient score on at least one of the three exams and no less than a basic score on the remaining two).

**The Alternative Assessment Pathway, the CTE Pathway or the Evidence-Based Pathway:** Each of these three pathways requires successful completion of Erie's Public Schools requirements for Algebra I, Literature and Biology. Each pathway also outlines different ways that students can demonstrate that they are ready for life after high school, ranging from an acceptance letter from a four-year college to military enlistment or a letter guaranteeing full-time employment upon obtaining a diploma.

A flowchart on the following page helps simplify the possibilities. Our guidance counselors and teachers will work closely with you to help you understand the various options and determine your best path to graduation.

# ACT 158 Graduation Decision Tree for EPS





## Smart Futures

Smart Futures ([www.smartfutures.org](http://www.smartfutures.org)) is a K-12 career planning and portfolio platform that helps schools easily implement the Academic Standards for Career Education and Work that are now required by the state of Pennsylvania.

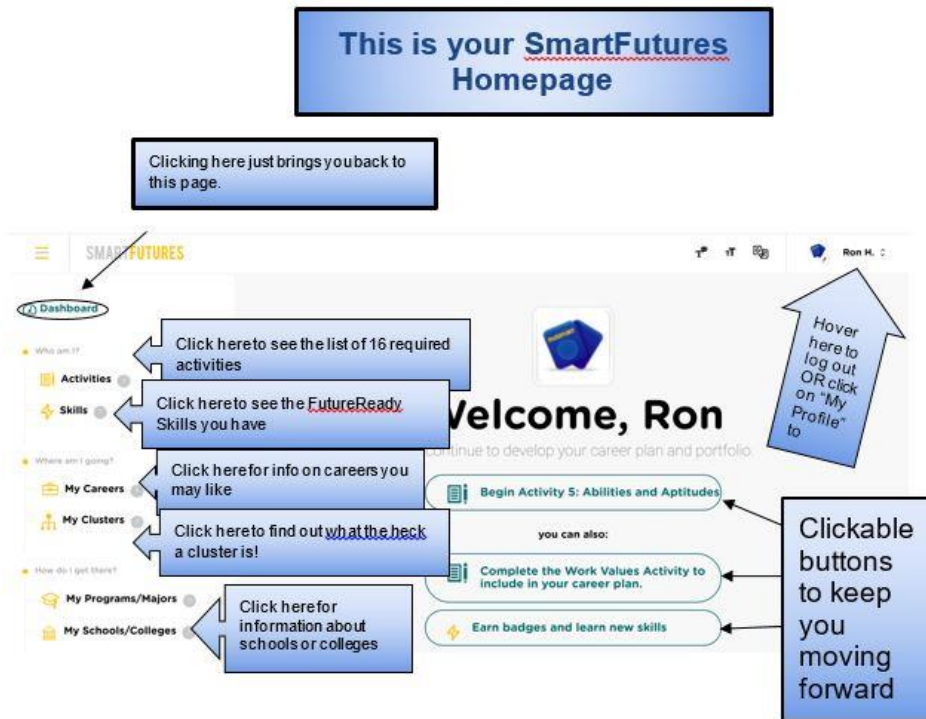
Not long ago, Pennsylvania became the first state in the country to require that all its high school graduates complete a personalized career plan and portfolio tied to K-12 career education benchmarks. These benchmarks, called the Pennsylvania Academic Standards for Career Education and Work (CEW Standards), provide the curriculum road map that assures that all students are prepared for 21st century success.

How does it work? Smart Futures provides a free online platform where students and teachers can work together to find, understand, and meet the expectations of Pennsylvania's standards for Career Education and Work. By navigating through the activities on the Smart Futures website, students can complete the portfolio of work Pennsylvania is looking for from its graduates. Teachers are on hand to help students complete the activities that ultimately reward the student with a portfolio of evidence to show they are armed with the tools commonly necessary for success in the world post-graduation, including a complete resume, cover letter-writing skills, career pathway awareness, and entry level knowledge and skills needed for entering the workforce.

As with most of your Cyber Choice Academy programming, all you'll need is your Chromebook to access the Smart Futures website. From there, your homeroom teachers will guide you through the steps outlined in the site to meet all 23 competencies across all four grade bands.

<https://www.smartfutures.org/>

Your 6-digit lunch number serves as both your username and password.



## Expectations - Code of Conduct

As a student of Erie’s Public Schools and a member of the Cyber Choice Academy, you have a responsibility to conduct yourself with the same high standards of honesty and integrity as your peers who are in traditional classrooms. In addition to signing off on the policies and consequences outlined in the Erie’s Public Schools Student Handbook and Code of Conduct, you must also sign the Cyber Choice Academy agreement as part of your enrollment process. We ask that you review the District’s Student Handbook prior to enrolling in the Cyber Choice Academy. The handbook can be found at [eriesd.org/handbook](http://eriesd.org/handbook).

**IMPORTANT NOTE:** All students must enter the building through the metal detectors stationed at the front doors. In addition to the metal detector security measure, you may also be wanded and your personal belongings may be searched at this time. This is not punitive, but rather a safety precaution.

# Schoolwide Positive Behavior Interventions and Support (SWPBIS)

The Cyber Choice Academy and all programs located at Emerson-Gridley utilize Positive Behavior Intervention Support, a nationally recognized model used to improve school safety and promote positive behavior. PBIS also helps teachers, students, and staff review data and make informed decisions about expectations and develop appropriate consequences when those expectations are not met. PBIS calls for teachers to deliver lessons about behavior just as they would about any other subject: When students are aware of expectations and understand them, students are better equipped to meet the expectations. Behavior expectations are taught and acknowledged throughout the school year. Our behavior expectations are centered around three main concepts: being respectful, being responsible and being resilient.

## Emerson-Gridley Expectations

We expect students to be:	Classrooms & Labs	Hallway	Dining Hall	Bathroom	Bus	Class Connect or Zoom
<i>Voice Choice:</i>	1 or 2	0 or 1	1 or 2	0 or 1	1 or 2	1 or 2
<b><u>Respectful</u></b>	<ul style="list-style-type: none"> <li>Be kind</li> <li>Keep food/drinks away from devices</li> <li>Use electronic devices correctly</li> <li>Follow the dress code</li> <li>Raise your hand</li> </ul>	<ul style="list-style-type: none"> <li>Be considerate of others' personal space</li> <li>Walk on the right side of the hall</li> <li>Use appropriate language and volume</li> <li>Stay on your assigned floor</li> </ul>	<ul style="list-style-type: none"> <li>Use manners</li> <li>Use appropriate language</li> <li>Clean up area before leaving</li> </ul>	<ul style="list-style-type: none"> <li>Follow pass procedures</li> <li>Return quickly to designated area (go, flush, wash, return)</li> <li>Honor the privacy of others</li> </ul>	<ul style="list-style-type: none"> <li>Use manners and positive language</li> <li>Listen quietly when the bus driver speaks</li> <li>Keep food/drinks closed and in bookbag</li> <li>Stay in your personal space</li> </ul>	<ul style="list-style-type: none"> <li>Keep camera on</li> <li>Mute yourself</li> <li>Answer the teacher when called upon</li> <li>Listen when your teachers and classmates are talking</li> <li>Keep food/drinks away from devices</li> </ul>
<b><u>Responsible</u></b>	<ul style="list-style-type: none"> <li>Be on time</li> <li>Stay at your desk or assigned area</li> <li>Stay on target to finish your work</li> <li>Actively participate in class and stay awake</li> <li>Be organized, have class materials and assignments ready</li> </ul>	<ul style="list-style-type: none"> <li>Pick up after yourself and throw away trash</li> <li>Follow hall pass procedures</li> <li>Stay tight to the right</li> </ul>	<ul style="list-style-type: none"> <li>Be on time</li> <li>Know your lunch number</li> <li>Report any problems, concerns, or unsafe situations to an adult</li> <li>Clean up area before leaving</li> </ul>	<ul style="list-style-type: none"> <li>Report any problems or concerns to an adult</li> <li>Clean up after yourself-use garbage cans for trash</li> </ul>	<ul style="list-style-type: none"> <li>Be on time for pick up and dismissal</li> <li>Board bus promptly using bus pass or paying fare</li> <li>Report any concerns to an adult</li> <li>Stay in your seat</li> </ul>	<ul style="list-style-type: none"> <li>Be on time</li> <li>Participate in instruction</li> <li>Attend required Class Connects or Zoom sessions</li> <li>Be prepared</li> <li>Complete daily to do list and/or daily assignments and required hours</li> </ul>
<b><u>Resilient</u></b>	<ul style="list-style-type: none"> <li>Set good examples</li> <li>Do your best</li> <li>Ask for help or <u>retakes</u> &amp; attend extra help, Class Connects, or Zoom Sessions</li> <li>Show acceptance of others</li> </ul>	<ul style="list-style-type: none"> <li>Report any problems, concerns, or unsafe situations to an adult</li> <li>Be aware of others &amp; your surroundings</li> <li>Have patience when transitioning</li> </ul>	<ul style="list-style-type: none"> <li>Use non-violent problem-solving strategies</li> <li>Wait quietly in line</li> </ul>	<ul style="list-style-type: none"> <li>Be patient when waiting to use a pass</li> </ul>	<ul style="list-style-type: none"> <li>Show acceptance of others</li> <li>Use non-violent problem-solving</li> <li>Be patient</li> </ul>	<ul style="list-style-type: none"> <li>Ask for help or <u>retakes</u> &amp; attend extra help, Class Connects, or Zoom Sessions</li> <li>Request lab hours</li> </ul>

## Final Note

As a student enrolled in the Cyber Choice Academy, you are responsible for your own learning. If you are unable to log in to a course or to Edgenuity, if you are experiencing technical difficulties, or if you feel it's been too long since you've heard from someone at Emerson-Gridley about your progress, it is YOUR responsibility to proactively seek help to find a solution. We're here to help, and we're only a phone call or email away.

# Cyber Choice Academy Student Checklist

---

- I, the undersigned, understand that I am taking on the responsibility of being actively involved in my own education and learning process. By signing below I acknowledge that I understand my responsibilities and obligations as a student in this program, and I recognize and accept the necessary non-traditional elements of the Cyber Choice Academy.
- I understand that I am required to be logged into my Imagine Edgenuity account for a minimum of 5 hours per school day, while also maintaining progress by completing at least 20 activities per school day.
- I understand that my enrollment will be admitted on a probationary period of 3 weeks, during which I must meet my weekly standards for attendance and activities. Failure to do so will result in my being enrolled with Erie High School.
- I have been notified of the availability of lab & Zoom sessions for extra help.
- I understand that having one week with 0 hours logged onto Imagine Edgenuity will result in me being required to attend in-person labs no less than two times per week.
- I understand that three consecutive weeks of not meeting the weekly standards for attendance and activities will result in me being required to attend in-person labs for 15 consecutive days
- I have been given a list of the cyber teachers with their contact information.
- I understand that it is my responsibility to keep track of my hours and ensure I am meeting my weekly standards for attendance and activities.
- I have completed the New Families Orientation.
- I understand I must make weekly contact via email, Zoom, text with my homeroom teacher.
- I understand that I must adhere to the Erie School's Code of Conduct as well as the Cyber Choice Academy Code of Conduct.

Student: \_\_\_\_\_

School Staff: \_\_\_\_\_

Date: \_\_\_\_\_